

ENGINEERED FOR THE EDGE

Build it right. Build with Sleeve-It.

SLEEVE-IT[®]
by STRATA

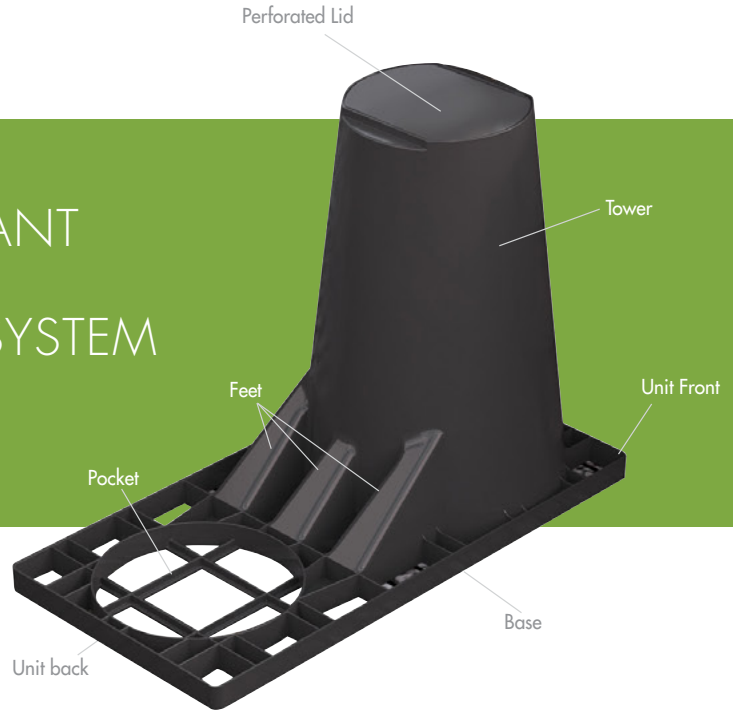
Authorised Partner



CODE COMPLIANT FENCE POST ANCHORING SYSTEM



*Sleeve-It units are palletized
in a stacked, nested format.*





Sleeve-It® SD-1 is a pre-engineered fence post anchoring solution for enhancing below-grade foundational stability in fences placed on top of a segmental retaining wall (SRW). Sleeve-It's patent-pending design allows stable fence footings to be integrated into the support structure of the SRW while it is being constructed. Because of its cantilevered form and other properties, using Sleeve-It during the SRW build permits a code-compliant fence to be constructed, eliminating the 36" offset requirements of IBC 1015.2.



CODE COMPLIANT

Sleeve-It is compliant with IBC 1015.2, IBC 1607.8.1 and ASCE 7 4.5.1.



MAXIMIZES LAND USE

Eliminates the offset requirement for rails and fences within 36" of the edge of the open side of an SRW.



STACKABLE AND PORTABLE

Lightweight, unitary design makes Sleeve-It easy to stack, store and transport to jobsites – reducing stocking space, shipping costs and labor requirements.



EASY TO INSTALL

Seamlessly integrates into the SRW construction process and eliminates the hassle of auguring once the wall is complete.



COMPATIBLE WITH MOST FENCES

Sleeve-It is designed to accommodate the most common SRW fence types.



RECYCLED MATERIAL

Sleeve-It is made with ~95% post-consumer recycled polypropylene.

SLEEVE-IT
by STRATA

STRONG. STABLE. SIMPLE.



SLEEVE-IT[®]

by STRATA

For further information please contact
our authorised partner below:



asset INTERNATIONAL STRUCTURES

Suite 5 Brecon House | William Brown Close
Llantarnam Industrial Park | Llantarnam
Cwmbran | Torfaen | NP44 3AB

+44 (0)1633 499830

www.assetint.co.uk | info@assetint.co.uk

SCAN THIS CODE
TO VISIT OUR PAGE:



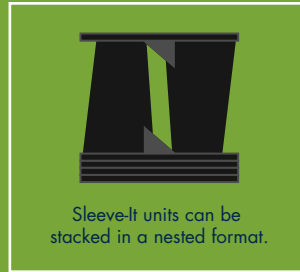
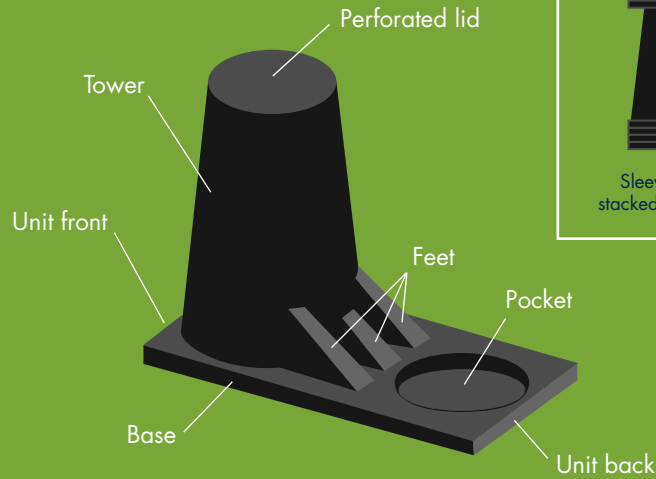
INSTALLATION GUIDELINES



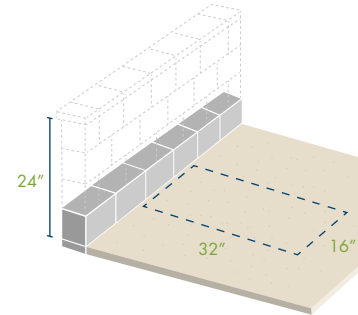
SLEEVE-IT[®]

by STRATA

UNIT DIAGRAM

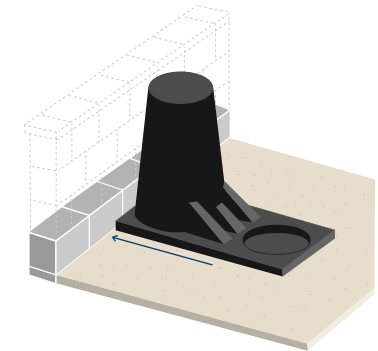


STEP 1 Surface Preparation



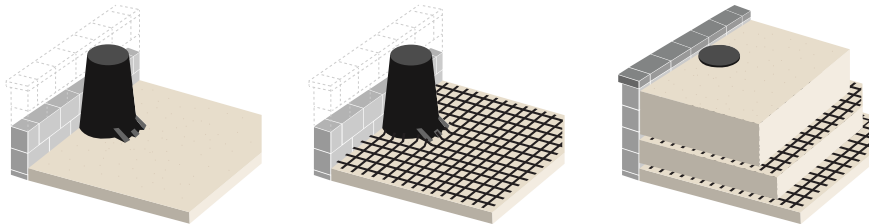
- Prepare a level surface area behind the wall face where the fence post is to be placed.
- The area should be approximately 16" wide by 32" deep.
- The elevation of the base of the Sleeve-It should be approximately 24" below the proposed top of the wall (not including the capstone).

STEP 2 Sleeve-it Placement



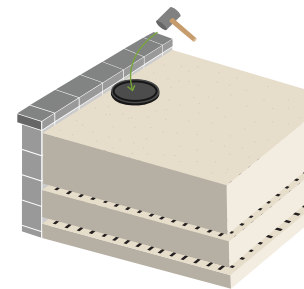
- Place the Sleeve-It unit on the level surface in an upright position with the front edge of the unit flush against the back of the wall.
- Multiple units should be spaced in accordance with fence specifications.

STEP 3 Backfilling Process



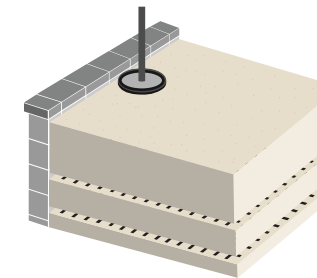
- Encapsulate and stabilize the Sleeve-It unit by placing and compacting sufficient backfill material layers as required.
- If geogrid is required, slit the geogrid perpendicular to the wall face just enough to fit around the base of the unit while ensuring that the geogrid remains properly attached to the wall.
- Continue the backfilling process as directed until the material reaches the top of the tower.
 - Do not remove perforated lid until ready to place post.
 - Do not step on perforated lid, as this could cause serious bodily injury.

STEP 4 Lid Detachment

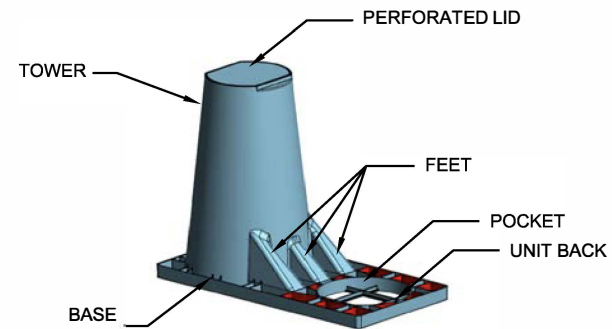
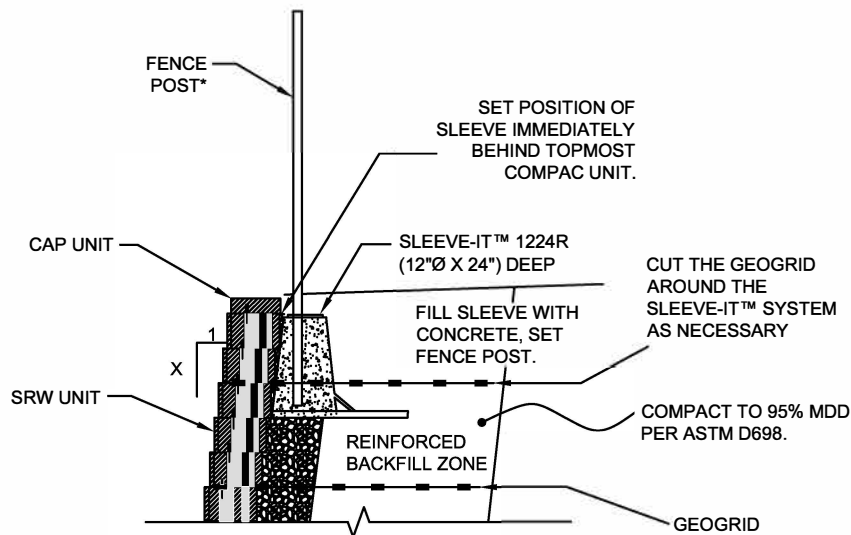


- Punch the perforated lid using a mallet or hammer to expose the inside of the Sleeve-It unit. Detached lids can be left inside the unit or discarded prior to pouring of infill material.

STEP 5 Post Placement



- Place post through the exposed area and rest on the flat ground surface area inside the Sleeve-It cavity.
- Ensure that the post is upright and level and hold in place while carefully pouring infill material, such as concrete, through the exposed cavity.
 - Follow guidelines specified by infill supplier.
 - Concrete is highly recommended as infill material.



**DETAIL OF FENCE POST INSTALLATION USING SLEEVE-IT™
N.T.S.**

ASSEMBLY & INSTALLATION

- 1. General** - The Sleeve-It™ post foundation system shall be purchased and installed by the retaining wall contractor to facilitate future fence post installation. Contractor shall verify proper spacing requirements prior to installation.
- 2. Assembly & Installation** - Refer to instructions provided with units for specific information related to the assembly of the Sleeve-It™ system and the correct installation procedure. When the segmental retaining wall has been constructed to two feet from top not including the capstone:
 - Step 1:** Prepare a level area approximately 24" wide x 36" deep behind the wall face. The prepared area should be 24" below the proposed top of wall (not including the cap stone).
 - Step 2:** Place the Sleeve-It unit on the level surface in an upright position with the front edge of the unit flush against the back of the wall. Multiple units should be spaced in accordance with fence specifications.
 - Step 3:** Encapsulate and stabilize the Sleeve-It unit by placing and compacting sufficient backfill material layers as required. If geogrid is required, slit the geogrid perpendicular to the wall face just enough to fit around the base of the unit while ensuring that the geogrid remains properly attached to the wall. Continue the backfilling process until the material reaches the top of the tower. Do not remove perforated lid until ready to place post. Do not step on perforated lid, as this could cause serious bodily injury.
 - Step 4:** Punch the perforated lid using a mallet or hammer to expose the inside of the Sleeve-It unit. Detached lids can be left inside the unit or discarded prior to pouring the infill material.
 - Step 5:** Place post through the exposed area and rest on the flat ground surface area inside the Sleeve-It cavity. Ensure that the post is upright and level and hold in place while carefully pouring infill material such as concrete through the exposed cavity. Follow guidelines as specified by infill supplier. Concrete is highly recommended as infill material.

Important Note: Backfill soil as prescribed by retaining wall manufacturer. Backfill material above and surrounding the Sleeve-It™ system must be compacted to a minimum of 95% of the material's maximum dry density as determined by **ASTM D-698** (Standard Proctor). Backfill and compaction within three feet of the wall face should be performed with hand operated equipment as recommended by the National Concrete Masonry Association (NCMA) SRW guidelines. Repeat Above Steps for next Sleeve-It™ unit.

Fence posts shall extend a minimum distance of 18" into the sleeve to ensure proper engagement with the Sleeve-It™ system. All posts must be on the "inboard" side of the vertical portion of the cantilever base. Fill cavity completely with concrete. When concrete cures, topsoil or other surficial cover may be placed over the Sleeve-It™ system to create final, finished appearance.

The Sleeve-It™ product shall be evenly spaced. Use of the Sleeve-It™ system is limited to the following fencing applications without consideration of wind load:

- 8-foot high and under chain link fences
- 6-foot high and under wood fence with gaps between boards
- 6-foot high and under ballustrated PVC, steel, aluminum or wrought iron fences.

For other fencing systems specifically not meeting these criteria, contact Strata Systems Inc., to determine suitability. 1 (800) 680-7750 or email strata@geogrid.com

ALL material may be subject to site testing for compliance to the above specifications.

	Authorised Partner
	DATE: 3/15/2018 SCALE: NTS DWG NO. SLEEVE-IT™ SECTION